

14-16 November 7.45pm

# The Flint Street Nativity

by Tim Firth

the writer of Calendar Girls,  
Neville's Island & Kinky Boots



The Little Theatre, Letchworth Settlement,  
Nevels Road, Letchworth, SG6 4UB

## PROGRAMME



## A Word from the Director

Having already directed a Tim Firth play, I should have known how challenging they can be. The Flint Street Nativity has continued my education, however, combining technical challenges like the need to completely change the scale of the set (in the time limit allowed by a single song) with a script that reflects the swirling chaos of a class of small children. I've even had to exercise my maths skills (every "child" prop needs to be 150% normal size, in case anyone wants to follow in our footsteps!).

All productions are a team effort, but I have been especially lucky in Flint Street to have the support of a very "special unit" of people. Hamish's title of Assistant Director does not in any way cover how energetic and indispensable he has been (I took to calling him my Brain), and we all await his directorial debut with excitement. An alternative title for this play could be "Oops, this appears to be a musical", which could have gone horribly wrong without the *maestro*, Derek, to rescue us with such kindness and humour, and make it a joy.

Everyone involved backstage has been working so hard since back in July, with only the occasional sigh when I point out issues of scale or complex props that need making only to be used in a one-time gag (that Tim Firth, again!). If anyone has considered getting involved backstage, we have a fantastic team who welcome new members with open arms. Sunday morning set building is an opportunity to pitch in with everything from operating power tools, to finger-painting a to-scale nativity scene or designing an ethnically-questionable talking donkey. And as Ass would say, "YOU GET BISCUITS"!

For a play which is 100% an ensemble piece, you need a talented cast. I have had the privilege to work with 12 actors who threw themselves into the nonsense from day one (including willingly putting a cardboard box on their heads to audition), and are extremely talented. Imagine the strain of learning these non-sequitous, chaotic lines, and then having to transform into your own parent in under 3 minutes! The whole cast have embraced the acting, technical and sometimes health challenges with good humour and skill, and I am indebted to them.

Finally, a shout out to my own almost-7 year old and his big sister, and to James for enabling me to go out and do silly things three times a week – thank you, stinkers.

I hope you have as much fun watching The Flint Street Nativity as I have directing it.

**Jenn Pickstone-Groves**

# THE FLINT STREET NATIVITY BEHIND THE SCENES

**DIRECTOR** - Jenn Pickstone-Groves

**MUSICAL DIRECTOR** - Derek Blyth

**ASSISTANT DIRECTOR** - Hamish Robb

**PROMPT** - Beth Moore

**STAGE MANAGER** - Tracy Rudeforth

**ASSISTANT STAGE MANAGER** - Hamish Robb

**PROPERTIES** - Anna Gillis

**LIGHTING** - Ruth Wall

**SOUND** - Phil Ross

**COSTUME** - Pat Baskerville

Alison Muir, Wendy Roskilly

**SET DESIGN** - Natalie Fox

**SET CONSTRUCTION AND DECORATION** - Rob Evans

Stephen Charles, Ivor Davies, Natalie Fox, Graham Frost,  
Kevin Hudson, Samantha Powell, Jo Roskilly, Phil Ross

## SPECIAL THANKS TO

Saskia and Ronin for the school artwork

Samantha Powell for Pedro

Kho Va Vi for the poster artwork

Daniel Fyson Writer for rehearsal photos

and the voice of Pedro

Gill and Tom for appearance by

Princess Bubblegum II as Peter Crouch

Letchworth Settlement for their support

[www.letchworthsettlement.org.uk](http://www.letchworthsettlement.org.uk)

David's Music for running our box office

[www.davids-music.co.uk](http://www.davids-music.co.uk)

**Am Dram Thank You Ma'am - Herts and Beds**

The Facebook group for local theatre  
in North Herts and South Beds

**FLINT STREET JUNIOR SCHOOL  
NATIVITY 2024**



**INNKEEPER**  
Tim Spink



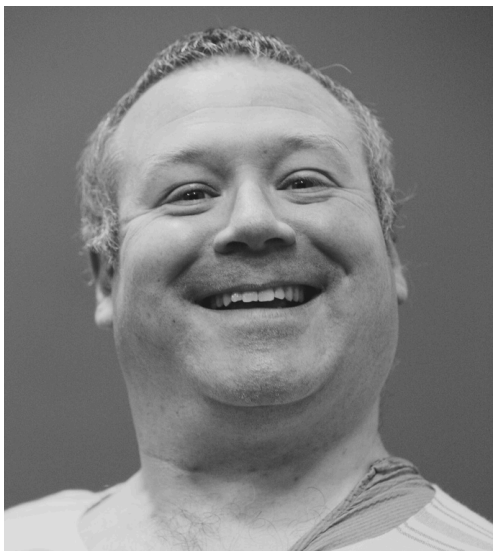
**NARRATOR**  
Stephen Charles



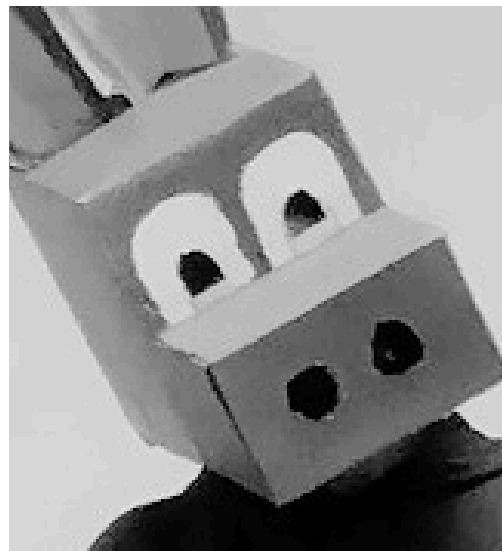
**WISE FRANK**  
Lewis Muir



**STAR**  
David Gillis



**HERROD / JOSEPH**  
James Barnard



**ASS**  
Jo Roskilly

**FLINT STREET JUNIOR SCHOOL  
NATIVITY 2024**



**MARY**  
Val Barber



**GABRIEL**  
Jess Landy



**SHEPHERD**  
Charlotte McDermott



**ANGEL**  
Charlotte Barber



**WISE GOLD**  
Diane Morrad



**DONKEY**  
Pedro

# The Settlement Players

Founded in 1923, the Settlement Players have been entertaining audiences in Letchworth and North Herts for over 100 years. Our aim is to provide a memorable theatrical experience in a local theatre at a reasonable price.

We currently stage three main productions a year in March, June and November. We also showcase one-act plays and the diverse talents of our members at our Opening Night in September.

We always look forward to welcoming new members both on stage and behind the scenes. If you would like more information, please contact us:



**[contactplayers@settlement-players.org.uk](mailto:contactplayers@settlement-players.org.uk)**  
**[www.settlement-players.co.uk](http://www.settlement-players.co.uk)**  
**or find us on social media**



## OUR NEXT PLAY

### **The Girl on the Train**

13-15 March 2025

Rachel Watson longs for a different life. Her only escape is the perfect couple she watches through the train window every day, happy and in love. Or so it appears. When Rachel learns that the woman she's been secretly watching has suddenly disappeared, she finds herself as a witness and even a suspect in a thrilling mystery in which she will face bigger revelations than she could ever have anticipated.

Adapted from Paula Hawkins' novel – an international phenomenon selling over twenty million copies worldwide – this gripping new play will keep you guessing until the final moment.

BASED ON THE BEST-SELLING NOVEL BY PAULA HAWKINS AND DREAMWORKS FILM  
ADAPTED BY RACHEL WAGSTAFF & DUNCAN ABEL



# THE GIRL ON THE TRAIN

A woman is missing  
Rachel Watson may be a vital witness  
But can she trust her own memories?

This amateur production is  
presented by arrangement with  
Concord Theatricals Ltd on  
behalf of Smauel French Ltd  
[www.concordtheatricals.co.uk](http://www.concordtheatricals.co.uk)

Show contains strong  
language and adult themes

## 13 - 15 MARCH 2025

The Little Theatre, Letchworth Settlement, Nevells Road, Letchworth, SG6 4UB  
[www.settlement-players.co.uk](http://www.settlement-players.co.uk)



# *Christmas*

## **ARTS & CRAFTS FAIR**



**NOVEMBER 29**

**FROM 2PM TO 7PM**



**Raffle, Tombola, Tea, Cakes,  
Music & Mulled wine**

[WWW.LETCHWORTHSETTLEMENT.ORG.UK](http://WWW.LETCHWORTHSETTLEMENT.ORG.UK)

229 NEVELLS ROAD LETCHWORTH

REGISTERED CHARITY NO. 311085

**FREE ENTRY**

